

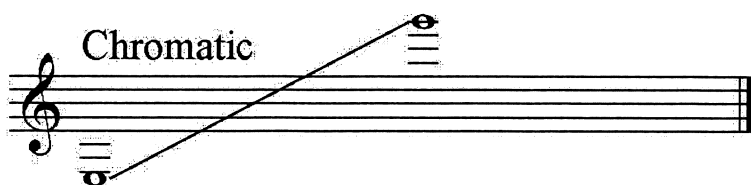
# Audition Music

This is the list of audition music for CFHS Ensembles for the 2024-2025 school year. Please prepare the music between the brackets. Measure numbers are also included below. The music is grade IV-V-VI. We are not looking for perfection, only your best effort. Good Luck!

If you have any questions, please see Mr. Gillette.

## Clarinet:

Lincolnshire Posy 4 <sup>th</sup> MVT. Beginning to Downbeat of Measure 14	♪ = 92-108
Holst Suite #1 2 <sup>nd</sup> MVT. REH. Letter C-D	♪ = 132-144
Holst Suite #2 4 <sup>th</sup> MVT REH. Letter B-D	♪ = 144
Schwanda The Bagpiper: Polka & Fugue - Fugue MEA. 1-F	♪ = 88
Variations on a Shaker Melody REH 1 – REH 3	♪ = 72
2 Major Scales with proper range (Like All Cty/Dist/State)	♪ = 100
<b><u>Scales will be chosen from all major scales</u></b>	
Chromatic Scale E below staff to G above high C (3 octaves + 3rd)	♪ = 120



PERCY ALDRIDGE GRAINGER

BRITISH FOLK-MUSIC SETTINGS

№ 34 "LINCOLNSHIRE POSY"

Based on English Folksongs gathered in Lincolnshire

FOR MILITARY BAND

1 DUBLIN BAY  
(Sailor's Song)

Noted down by Percy Aldridge Grainger (1905) from the singing of Mr. Deane (of Hibaldstowe, Lincolnshire, England) and set for Military Band

by

PERCY ALDRIDGE GRAINGER

By kind permission of Messrs. Boosey & Co., Ltd., the "Duke of Marlborough" folk-song tune (published in ENGLISH TRADITIONAL SONGS AND CAROLS, by Lucy E. Broadwood, Boosey & Co., Ltd.), freely created, is introduced as a counter melody in "Dublin Bay," beginning at bar 36.

This version of "Dublin Bay" for Military Band (scored Jan. or Feb. 1937) is an off-shoot from the root-form which was tone-wrought for Wind 5-some (June-July 1931) on sketches for chorus dating from March 19 1906.

B♭ CLARINET I

Brisk

Cornet 1 *mf non legato*

10 *mf*

18 *non legato*

26 *mf p*

34 *dolce cresc.*

42 *mf mp mp*

50

58

64 *cresc. dim. 2 2 f espr. p*

*ritard.*

*♩. = 106*

First Suite in E<sup>b</sup>

♩ = 132-144

Solo B<sup>b</sup> Clarinet

Mvt II Intermezzo<sup>3</sup>

Gustav H<sup>o</sup>lst

**C** L'istesso tempo

Solo

*p dolce*



**D**



**E**



**F** L'istesso tempo



(senza rit.)

*morendo*

Second Suite in F  
Solo Clarinet in B $\flat$ . Gustav Holst

3

4. FANTASIA ON THE 'DARGASON'

Allegro moderato

Sax.

One player only

*p*

**A** Tutti  
*p senza cres.*

*cres.*

$\text{♩} = 144$  **B**

*dim.*

**C** (One beat in a bar but keep the same pace as before)  
(Green Sleeves)

*p* *mp* Euph Solo

*mp cantabile*

**6**

# Schwanda: Polka + Fugue

## 1st Bb Clarinet

*espress. possibile*

*p*

**D**

*mf cresc.*

*ff*

*pp*

*ff*

*pp*

*ff*

*sfz*

**E**

*sfz*

*sfz attacca*

**b) Fugue**

**Allegro non troppo (fuga)**

$\text{♩} = 88$

*pp*

**F**

*pp*

*mf*

**G**

**H**

*pp*

# VARIATIONS ON A SHAKER MELODY

From Appalachian Spring

## 1st B $\flat$ Clarinet

AARON COPLAND

Moderate tempo ( $\text{♩} = 72$ )

**1** Cort. I *p*

**1** Solo *p simply expressive*

**2** Tutti *ff* *p* Solo

**3** A trifle faster ( $\text{♩} = 80$ ) *p*

**4** *ff* *mf*

**5** **9** **6** **1** *f cant.*

**7**

**8**

Clarinet - District XV Major Scales

This musical score displays 12 major scales for the clarinet, starting from C major and ending at G major. Each scale is presented on a single staff in treble clef with a common time signature (C). The scales are: C, F, Bb, Eb, Ab, Db, Gb, B, E, A, D, and G. The starting measure number for each scale is indicated on the left side of the staff: 6 for F, 13 for Bb, 18 for Eb, 23 for Ab, 28 for Db, 33 for Gb, 40 for B, 45 for E, 52 for A, 57 for D, and 62 for G. Each scale consists of an ascending and a descending line of notes, with a final whole note at the end of the descending line. The notes are written in a standard musical notation with stems and flags for sixteenth notes.