

# Audition Music

This is the list of audition music for CFHS Ensembles for the 2024-2025 school year. Please prepare the music between the brackets. Measure numbers are also included below. The music is grade V-VI. We are not looking for perfection, only your best effort. Good Luck!

If you have any questions, please see Mr. Gillette.

## Oboe:

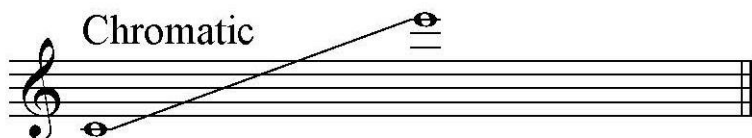
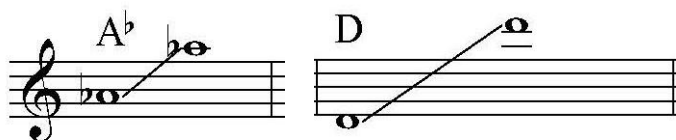
Lincolnshire Posy – VI Lost Lady Found Bar 65 - 81 & 130 - End  $\text{♩} = 80$   
(Upper part)

Second Suite in F– Holst 2nd Mvt. 4<sup>th</sup> Beat of Reh. A to 4 before End  $\text{♩} = 60$

Gekeler Etude #4  $\text{♩} = 104$

D & Ab Major Scales (Like All County/District/State)  $\text{♩} = 100$

Chromatic Scale Sixteenth Notes (Same as County/District/State)  $\text{♩} = 100$



OBOES I & II

*d. = 80*

# II. Song without words "I'll love my Love."

Andante.  $\text{♩} = 66-69$   
Solo (or Clar)

*p*

*ad lib.*

*A tempo.*

*ad lib.*

1 2

4) Bartok, *Concerto for Orchestra*, Mvt. 2, mm. 25-44  
Quarter note = 94

25

*p*

*f*

*p*

*f mf*

33

*sempre stacc.*

41

45

Allegretto (♩ = 104)

3/24/13

Handwritten scribbles

The image shows a handwritten musical score for a piece titled "Allegretto" with a tempo marking of ♩ = 104. The score is written on four staves of music. The key signature is one flat (B-flat), and the time signature is 4/4. The music features a melodic line with various rhythmic patterns, including eighth and sixteenth notes, and rests. There are several dynamic markings, including *p* (piano) and accents. The score includes repeat signs and a double bar line at the end. There are also some handwritten annotations, such as "3/24/13" and some scribbles at the top right.

1-1.2

Oboe - District XV Major Scales

This musical score displays twelve major scales for the oboe, arranged in a sequence of ascending and then descending notes. Each scale is written on a single staff in treble clef with a common time signature (C). The scales are labeled with their respective key signatures: C, F, Bb, Eb, Ab, Db, Gb, B, E, A, D, and G. The starting measure number for each scale is indicated at the beginning of the staff: 6, 11, 16, 21, 26, 31, 36, 41, 46, 51, and 56. The scales are written in a standard ascending and descending pattern, with the final note of each scale being a whole note.

C

6

F

11

Bb

16

Eb

21

Ab

26

Db

31

Gb

36

B

41

E

46

A

51

D

56

G