

Audition Music

This is the list of audition music for CFHS Ensembles for the 2025-2026 school year. Please prepare the music between the brackets. Measure numbers are also included below. The music is grade V-VI. We are not looking for perfection, only your best effort. Good Luck!

If you have any questions, please see Mr. Gillette.

Bass Clarinet:

Folk Song Suite MVT. 3 Trio 2/4 Section (Brackets)	♪ = 120
Lincolnshire Posy Mvt. IV MM. 1-17	♪ = 92
Folk Song Suite MVT. 2 Bracketed Section	♪ = 54
March Slav 53-58	♪ = 92
Any two Major Scales Chosen by teacher (Like All County/District/State)	♪ = 100
All State/County/District Chromatic Scale Sixteenth Notes	♪ = 120

№ 3 MARCH "FOLK SONGS FROM SOMERSET"

Allegro

mf *p* *ff* *mf* *f* *p* *ff* *rall. (2nd time)* *Fine* *f* *ff*

Trio 16 *ff* *marcato simile* 1 2 *D.C.*

4. "THE BRISK YOUNG SAILOR"
(who returned to wed his True Love)

(♩ = 96) 112
Sprightly

p

9

mp (marked)

17

(reedy)

mp

♩ = 52-56

CAROLINE

6

13

19

B \flat Bass Clarinet

No 2 INTERMEZZO - "MY BONNY BOY"

Andantino

pp

pp

1

4

mp cantabile

p

f

pp

Poco Allegro (scherzando)

15

pp

rit.

f

pp

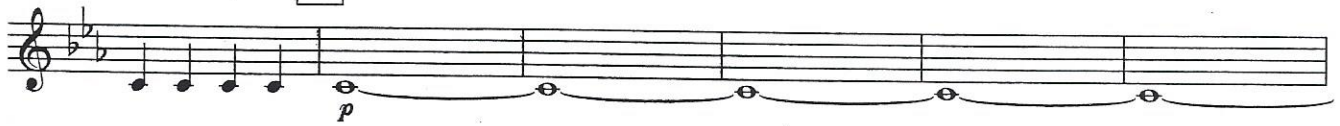
Tempo 10

8

pp

pp

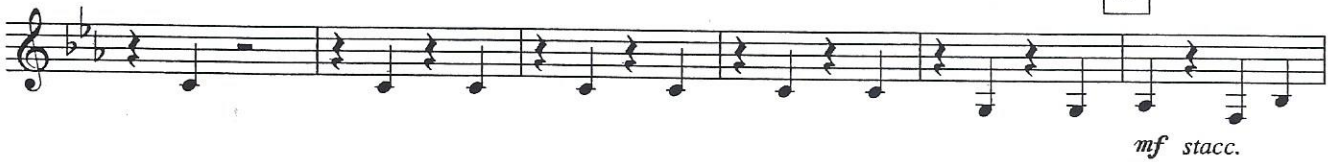
13



21



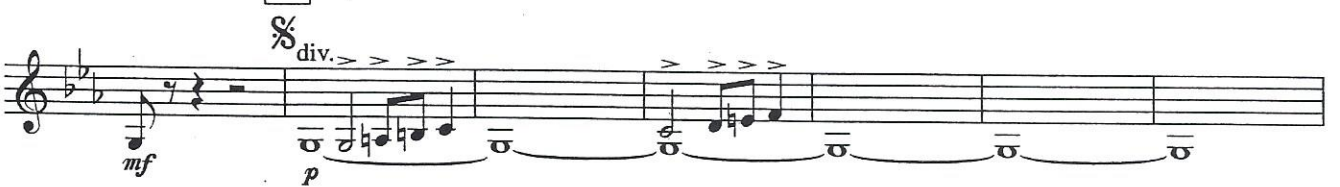
29



37



37



45



53

mf $\text{♩} = 92$



58

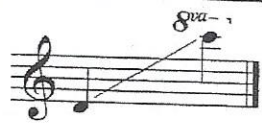

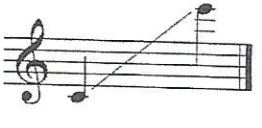



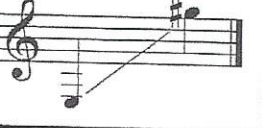
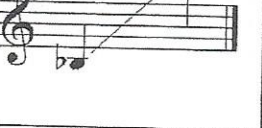


Bass Clarinet - District XV Major Scales

This musical score displays twelve major scales for the Bass Clarinet, each starting on a different note. The scales are written in treble clef with a common time signature (C). The notes and their corresponding scale keys are: C (C major), F (F major), Bb (Bb major), Eb (Eb major), Ab (Ab major), Db (Db major), Gb (Gb major), B (B major), E (E major), A (A major), D (D major), and G (G major). Each scale is presented as a single melodic line on a five-line staff, consisting of an ascending and a descending sequence of notes. The starting measure for each scale is indicated by a measure number (6, 11, 16, 21, 26, 31, 36, 41, 46, 51, 56) placed above the staff. The scales are arranged vertically on the page, with each scale occupying one staff.

Chromatic Scale Range Requirements

Woodwinds

INSTRUMENT	RANGE	MINIMUM TEMPO
Piccolo		Quarter Note = 120 mm
Flute 3 octaves C to C		Quarter Note = 120 mm
Oboe		Quarter Note = 120 mm
Bassoon		Quarter Note = 96 mm
Eb & Bb Soprano Clarinet		Quarter Note = 120 mm
Bass Clarinet		Quarter Note = 120 mm
Contra Bass Clarinet		Quarter Note = 96 mm
Saxophones (hold high F for 2 counts)		Alto & Tenor Sax Quarter Note = 120 mm Baritone Sax Quarter Note = 96 mm