

Audition Music

This is the list of audition music for CFHS Ensembles for the 2025-2026 school year. Please prepare the music between the brackets. Measure numbers are also included below. The music is grade V-VI. We are not looking for perfection, only your best effort. Good Luck!

If you have any questions, please see Mr. Gillette.

Clarinet:

Tchaikovsky – March Slav mm. 5 – 20

♩ = 72

Debussy – The Engulfed Cathedral 29 - 42

♩ = 56

Weinberger - Schwanda: Polka & Fugue - Fugue 1 - F

♩ = Around 88

Vaughan Williams Folk Song Suite MVT 1 Between Brackets

♩ = 112

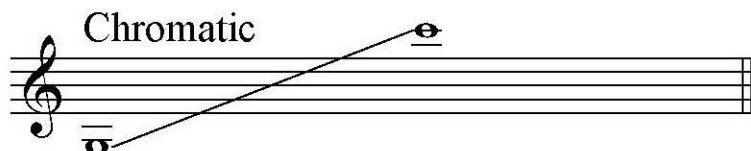
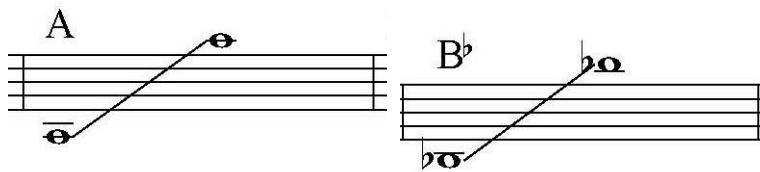
A & Bb Major Scales (Like All County/Dist/State)

♩ = 100

Chromatic Scale Sixteenth Notes (Same as Cty/Dist/State)

♩ = 100

(Start on low F# and go as high as you can and come back down)



1ST B \flat CLARINET

Dedicated to the New Glarus, Wisconsin High School Band

MARCH SLAV

Moderato; in the style of a funeral march

P.I. TCHAIKOVSKY, Op. 31
Arr. by LARRY DAEHN

4 5

p espr.

13

p

21

plaintive

poco più f

29 $\text{♩} = 72$

molto dolce (sweetly)

37

f

THE ENGULFED CATHEDRAL

(La Cathedrale engloutie from PRELUDES, Book I)

B \flat CLARINET I

CLAUDE DEBUSSY
Freely transcribed by
Merlin Patterson

Profoundly calm, as if in a sweetly sonorous mist ($\text{♩} = 48$)

6 *pp*

8 Sweetly, fluidly *pp* *pp*

11 Without nuance *pp* *tutti*

15

17 Gradually emerging from the mist *p* *mp* *mf* *f* Gradually faster, without rushing

21

23 *ff*

25 *fff* 29 Sonorous, without harshness

32

40

43 *mf* *mp* *p* *pp*

49 Slightly faster, expressively *mp* *mf* *f*

62 *ff* *div.* *p* 6

65

74 In the original tempo 12 *p* 86 With the sonority of the beginning *div.* *unis.* *mp* *p*

espress. possibile

p

mf cresc. ff

pp ff **Più pesante**

pp

ff sfz

sfz sfz attacca

$\text{♩} = 88$

Allegro non troppo (fuga)

b) Fugue

pp

pp **F**

mf

G

pp **H**

Solo Clarinet in Bb.

Folk Song Suite.

R. Vaughan Williams.

FOR MILITARY BAND.

No 1. MARCH - "SEVENTEEN COME SUNDAY."

Allegro.

f *pp* *mf* *p* *ff* *simile.*

to Coda.

Cantabile. *p*

Cantabile. *p*

ff marcato.

1. 2. *Cantabile.* *p* $\text{♩} = 112$

Cantabile. *p*

⊕ Coda. *ff*

D.C.

Clarinet - District XV Major Scales

This musical score displays 12 major scales for the clarinet, arranged vertically from C major at the top to G major at the bottom. Each scale is written on a single staff in treble clef with a common time signature (C). The scales are: C, F, Bb, Eb, Ab, Db, Gb, B, E, A, D, and G. The starting measure number for each scale is indicated on the left side of the staff: 6 for F, 13 for Bb, 18 for Eb, 23 for Ab, 28 for Db, 33 for Gb, 40 for B, 45 for E, 52 for A, 57 for D, and 62 for G. Each scale consists of an ascending and a descending line of notes, with a final whole note on the tonic. The notes are written as eighth notes in the ascending line and quarter notes in the descending line.

All-Virginia Auditions Scale Ranges

Clarinet in B \flat

Scale ranges for notes C, F, B \flat , and E \flat . Each note is shown with its two possible fingerings on the clarinet staff.

Scale ranges for notes A \flat , D \flat /C \sharp , G \flat /F \sharp , and C \flat /B \sharp . Each note is shown with its two possible fingerings on the clarinet staff.

Scale ranges for notes E, A, D, and G. Each note is shown with its two possible fingerings on the clarinet staff.

Handwritten musical staff showing a chromatic scale from E \flat to E. The staff is circled in black. The word "Chromatic" is written on the left, and "E to E" is written on the right.