

# Audition Music

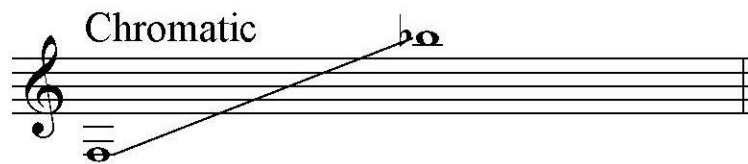
This is the list of audition music for CFHS Ensembles for the 2021 - 2022 school year. Please prepare the music between the brackets. Measure numbers are also included below. The music is grade V-VI. We are not looking for perfection, only your best effort. Good Luck!

If you have any questions, please see Mr. Gillette.

## French Horn:

0ff^\* ;[ ÁT [ á^|æf  
T [ !&æ Æ^ÁÓ ] &!cÁ

Low F- High Bb Chromatic Scale Sixteenth Notes (Same as Cty/Dist/St) ♩ = 100



*p* *f* *p* *f* *f*

1. 2. 3. 4. 5.

Allegro moderato

*p* *cresc.* *f* *p* *f*

*cresc.* *f* *p* *f*

*p* *cresc.*

1. 2. 3. 4. 5.

Allegretto

*p* *f*

# MORCEAU DE CONCERT

FOR FRENCH HORN and PIANO

OR ORCHESTRA

Play up to the Red Bracket.

C. SAINT-SAËNS

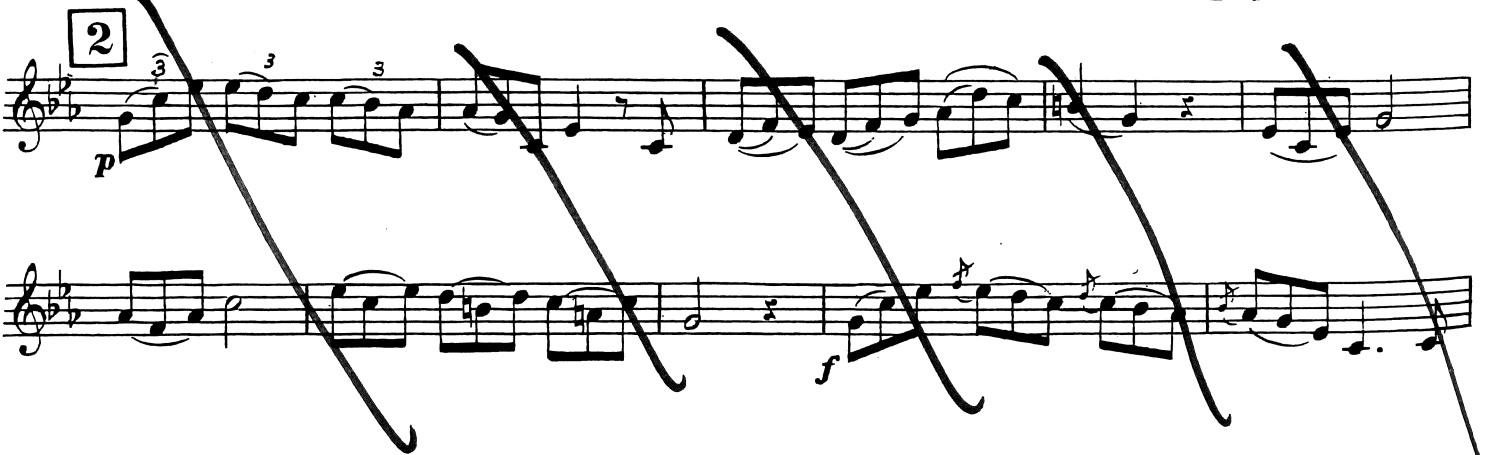
Op. 94

EN FA


All<sup>o</sup> mod<sup>to</sup>



2



French Horn - District XV Major Scales

C  Musical staff for C major scale, starting at measure 1. The scale is written in treble clef with a common time signature (C). It consists of a half note followed by quarter notes for the ascending and descending sequences.

6  Musical staff for F major scale, starting at measure 6. The key signature has one flat (Bb). It consists of a half note followed by quarter notes for the ascending and descending sequences.

11  Musical staff for Bb major scale, starting at measure 11. The key signature has two flats (Bb, Eb). It consists of a half note followed by quarter notes for the ascending and descending sequences.

16  Musical staff for Eb major scale, starting at measure 16. The key signature has three flats (Bb, Eb, Ab). It consists of a half note followed by quarter notes for the ascending and descending sequences.

21  Musical staff for Ab major scale, starting at measure 21. The key signature has four flats (Bb, Eb, Ab, Db). It consists of a half note followed by quarter notes for the ascending and descending sequences.

26  Musical staff for Db major scale, starting at measure 26. The key signature has five flats (Bb, Eb, Ab, Db, Gb). It consists of a half note followed by quarter notes for the ascending and descending sequences.

31  Musical staff for Gb major scale, starting at measure 31. The key signature has six flats (Bb, Eb, Ab, Db, Gb, Cb). It consists of a half note followed by quarter notes for the ascending and descending sequences.

36  Musical staff for B major scale, starting at measure 36. The key signature has five sharps (F#, C#, G#, D#, A#). It consists of a half note followed by quarter notes for the ascending and descending sequences.

41  Musical staff for E major scale, starting at measure 41. The key signature has four sharps (F#, C#, G#, D#). It consists of a half note followed by quarter notes for the ascending and descending sequences.

46  Musical staff for A major scale, starting at measure 46. The key signature has three sharps (F#, C#, G#). It consists of a half note followed by quarter notes for the ascending and descending sequences.

51  Musical staff for D major scale, starting at measure 51. The key signature has two sharps (F#, C#). It consists of a half note followed by quarter notes for the ascending and descending sequences.

56  Musical staff for G major scale, starting at measure 56. The key signature has one sharp (F#). It consists of a half note followed by quarter notes for the ascending and descending sequences.