

Audition Music

This is the list of audition music for CFHS Ensembles for the 2025-2026 school year. Please prepare the music between the brackets. Measure numbers are also included below. The music is grade V-VI. We are not looking for perfection, only your best effort. Good Luck!

If you have any questions, please see Mr. Gillette.

Oboe:

Lincolnshire Posy – VI Lost Lady Found Bar 65 - 81 & 130 - End $\text{♩} = 80$

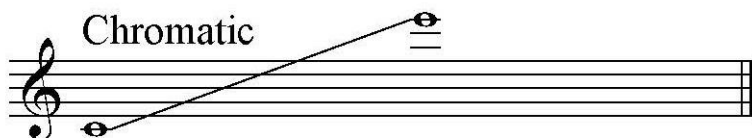
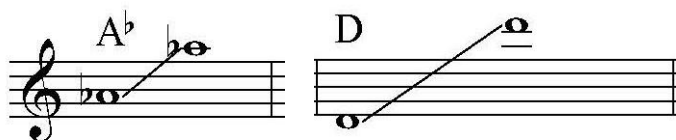
(Upper part)

Second Suite in F– Holst 2nd Mvt. 4th Beat of Reh. A to 4 before End $\text{♩} = 60$

Gekeler Etude #4 $\text{♩} = 104$

D & Ab Major Scales (Like All County/District/State) $\text{♩} = 100$

Chromatic Scale Sixteenth Notes (Same as County/District/State) $\text{♩} = 100$



OBOES I & II

d. = 80

II. Song without words "I'll love my Love."

Andante. $\text{♩} = 66-69$
Solo (or Clar)

p

ad lib.

A tempo.

ad lib.

1 2

4) Bartok, Concerto for Orchestra, Mvt. 2, mm. 25-44
Quarter note = 94

25

p

f

p

f mf

33

sempre stacc.

41

45

Allegretto (♩ = 104)

3/24/13

Handwritten scribbles

The image shows a handwritten musical score for a piece titled "Allegretto" with a tempo marking of ♩ = 104. The score is written on four staves of music. The key signature is one flat (B-flat), and the time signature is 4/4. The music features a melodic line with various rhythmic patterns, including eighth and sixteenth notes, and rests. There are several dynamic markings, including *p* (piano) and accents. The score includes repeat signs and a double bar line with repeat dots. There are also some handwritten annotations, such as "3/24/13" and some scribbles at the top right.

1-1.2

Oboe - District XV Major Scales

This musical score displays twelve major scales for the oboe, arranged vertically from C major at the top to G major at the bottom. Each scale is written on a single staff in treble clef with a common time signature (C). The scales are: C major (starting at measure 1), F major (starting at measure 6), Bb major (starting at measure 11), Eb major (starting at measure 16), Ab major (starting at measure 21), Db major (starting at measure 26), Gb major (starting at measure 31), B major (starting at measure 36), E major (starting at measure 41), A major (starting at measure 46), D major (starting at measure 51), and G major (starting at measure 56). Each scale consists of an ascending and a descending line, with the descending line ending on a whole note. The key signatures are indicated by flats or sharps at the beginning of each staff.